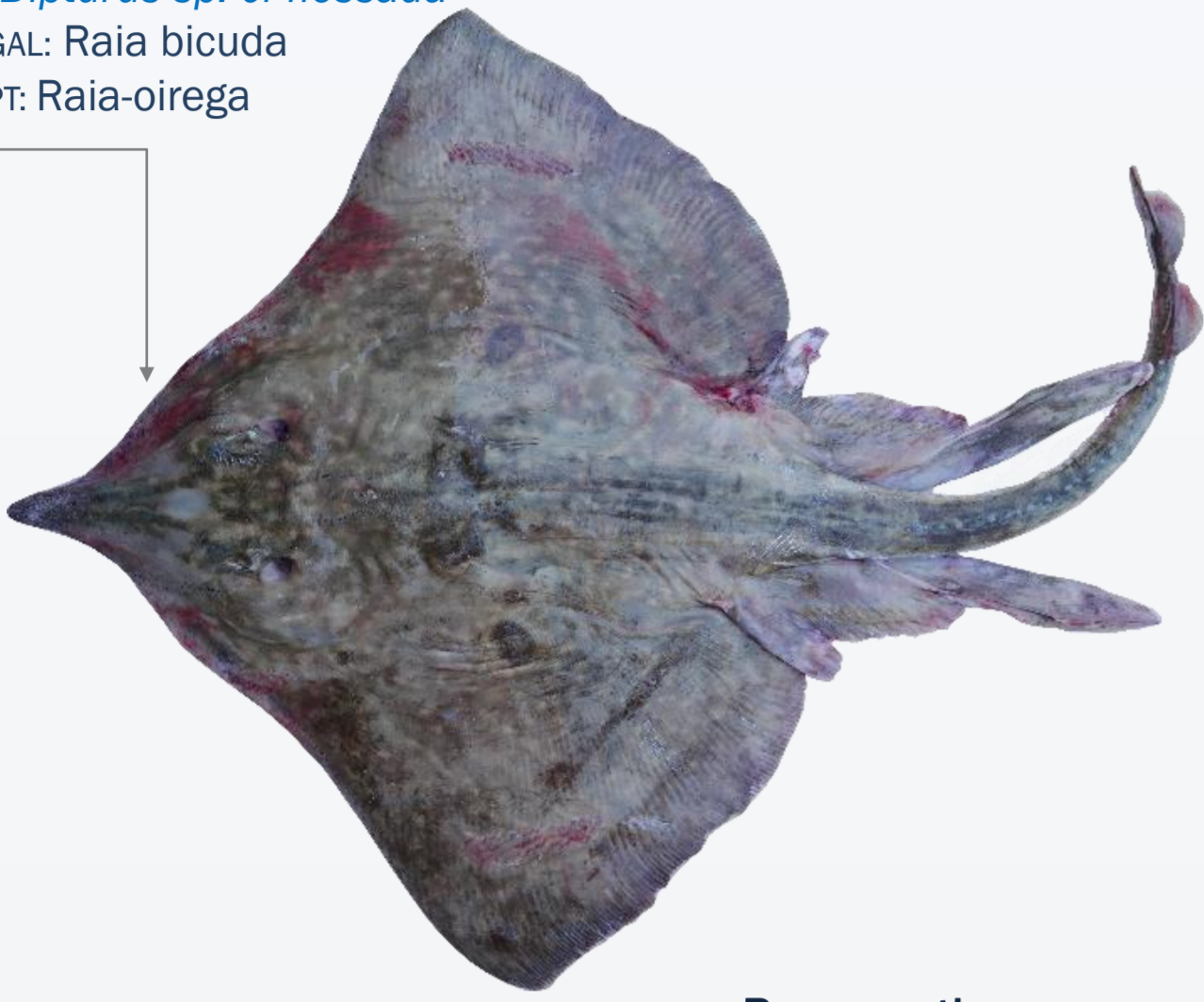


Biodiversidad marina de Galicia y el Cantábrico

Rayas en los caladeros pesqueros

Raja noriega

RJB *Dipturus sp. cf. flossada*
GAL: Raia bicuda
PT: Raia-oirega



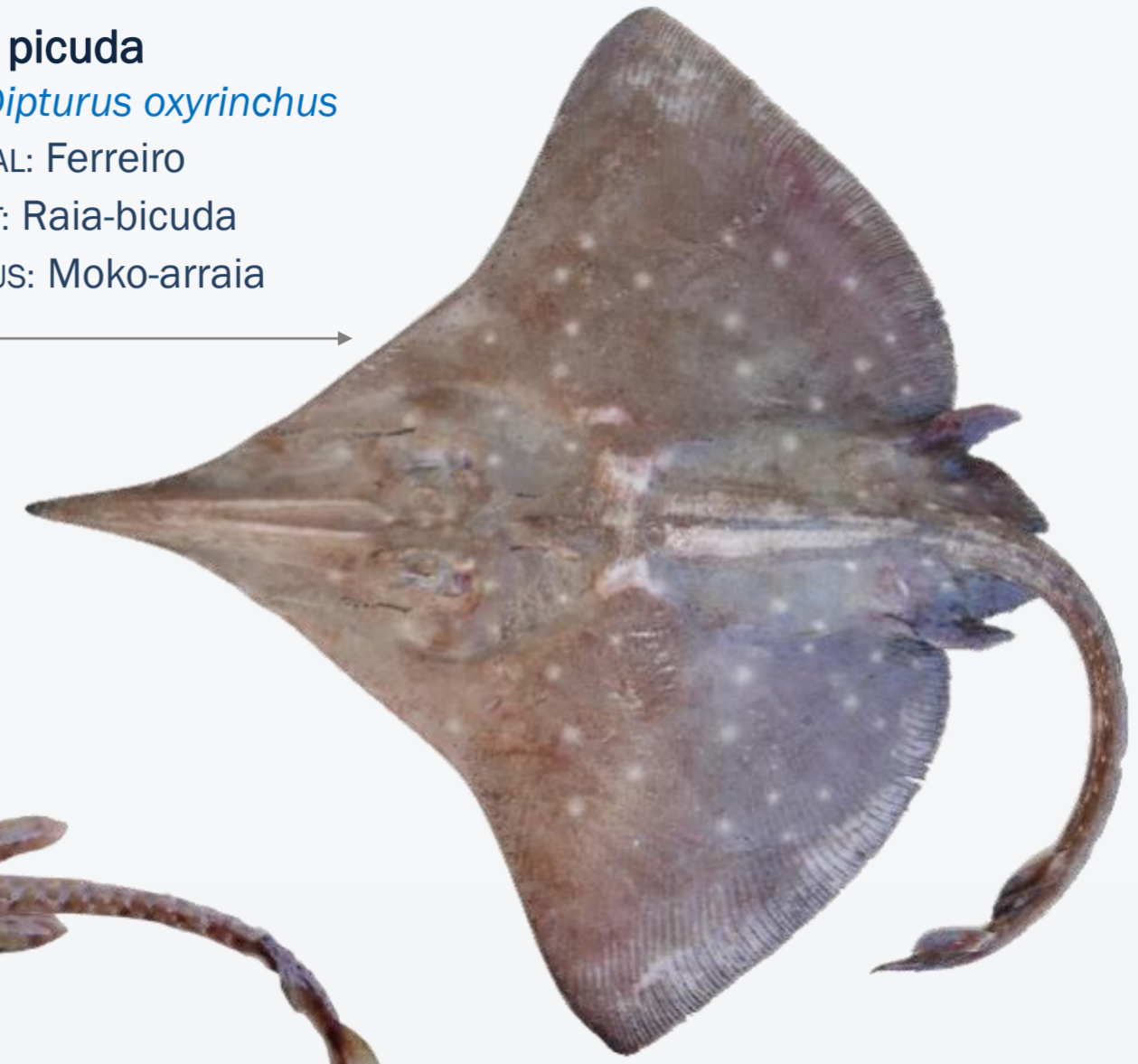
Raya de espejos

JAI *Raja miraletus*
GAL: Raia de espellos
PT: Raia-quatro-olhos



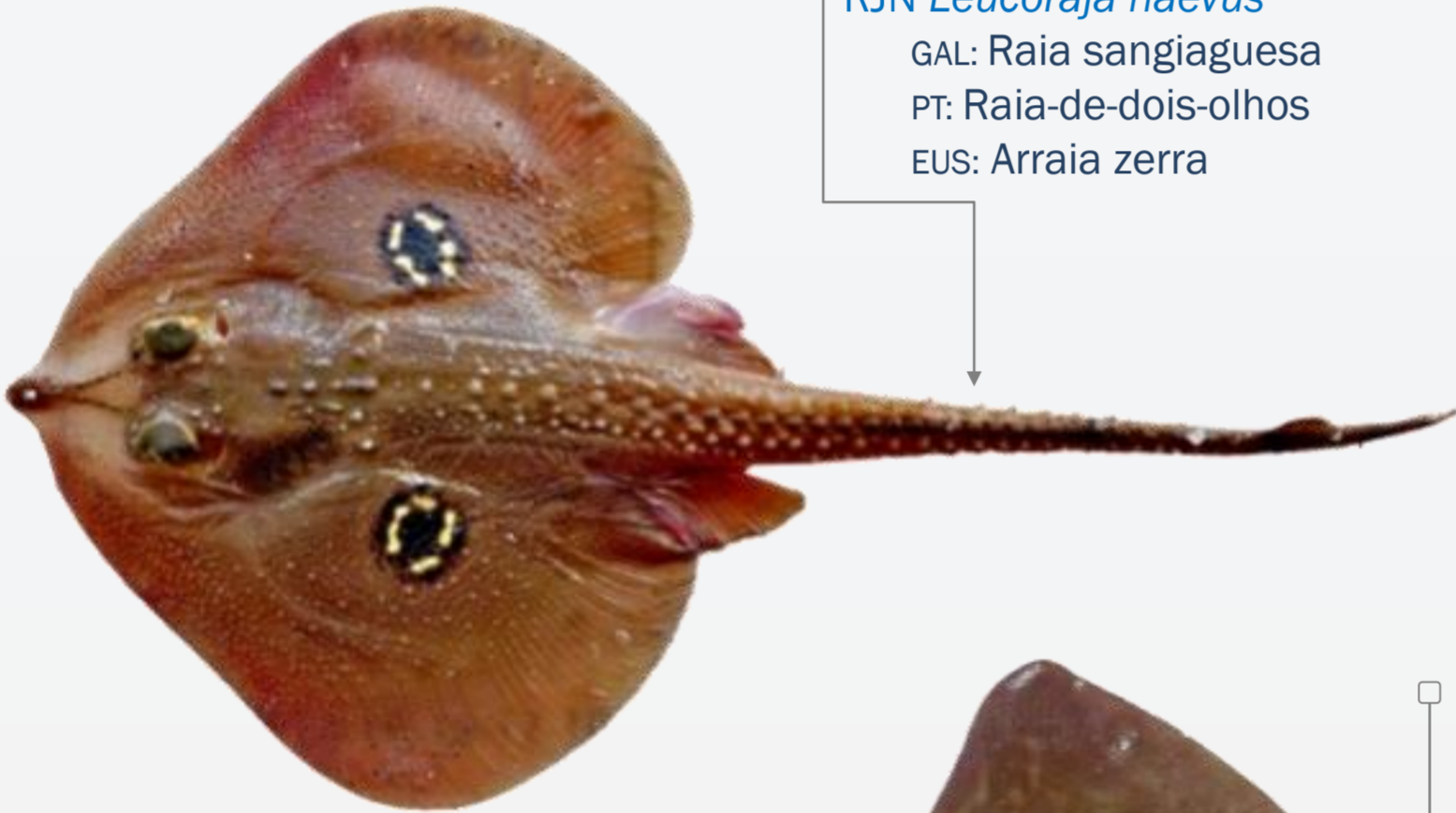
Raya picuda

RJO *Dipturus oxyrinchus*
GAL: Ferreiro
PT: Raia-bicuda
EUS: Moko-arraia



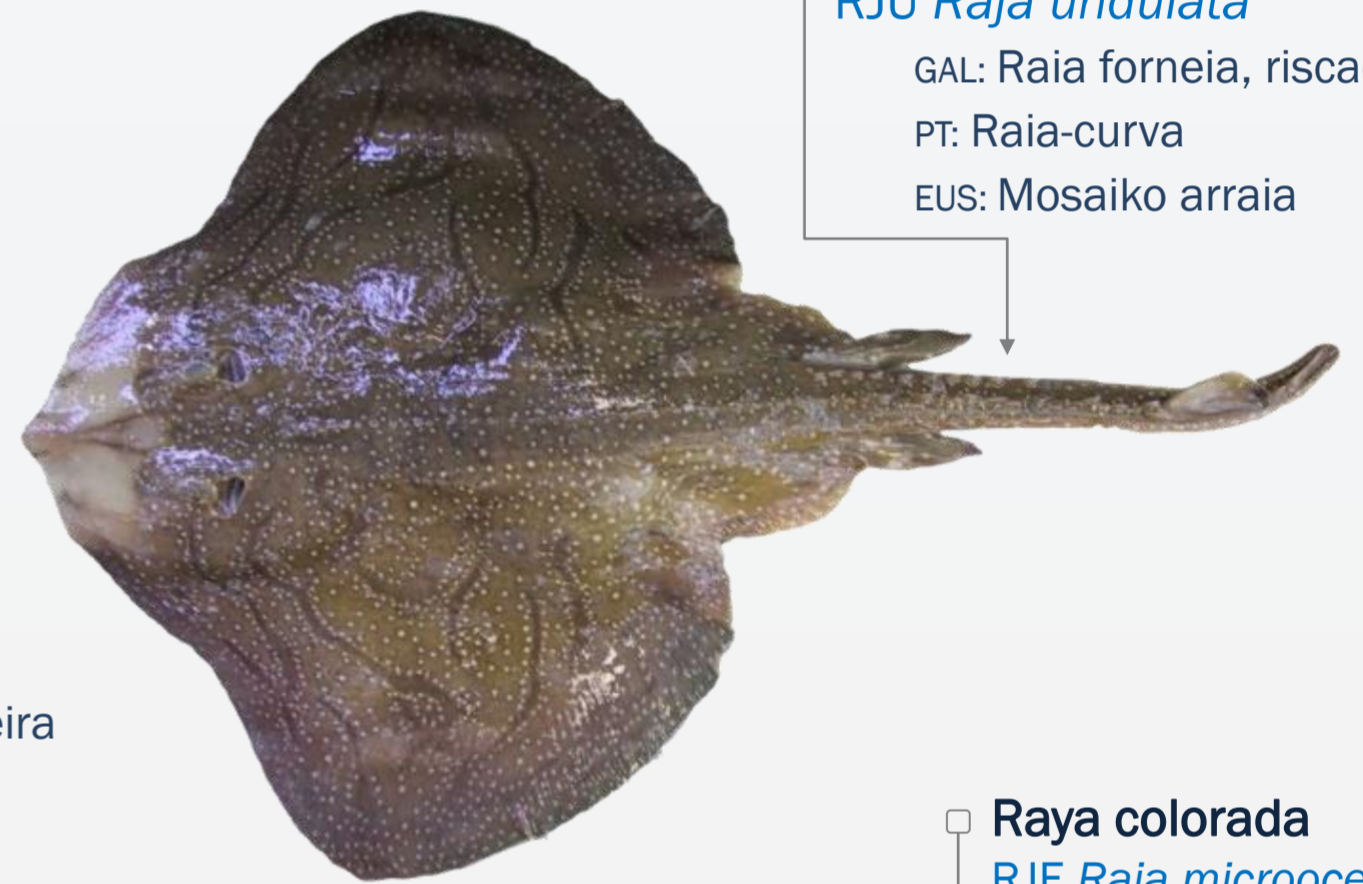
Raya santiaguesa

RJN *Leucoraja naevus*
GAL: Raia santiaguesa
PT: Raia-de-dois-olhos
EUS: Arraia zerra



Raya mosaico

RJU *Raja undulata*
GAL: Raia forneia, riscada
PT: Raia-curva
EUS: Mosaiko arraia



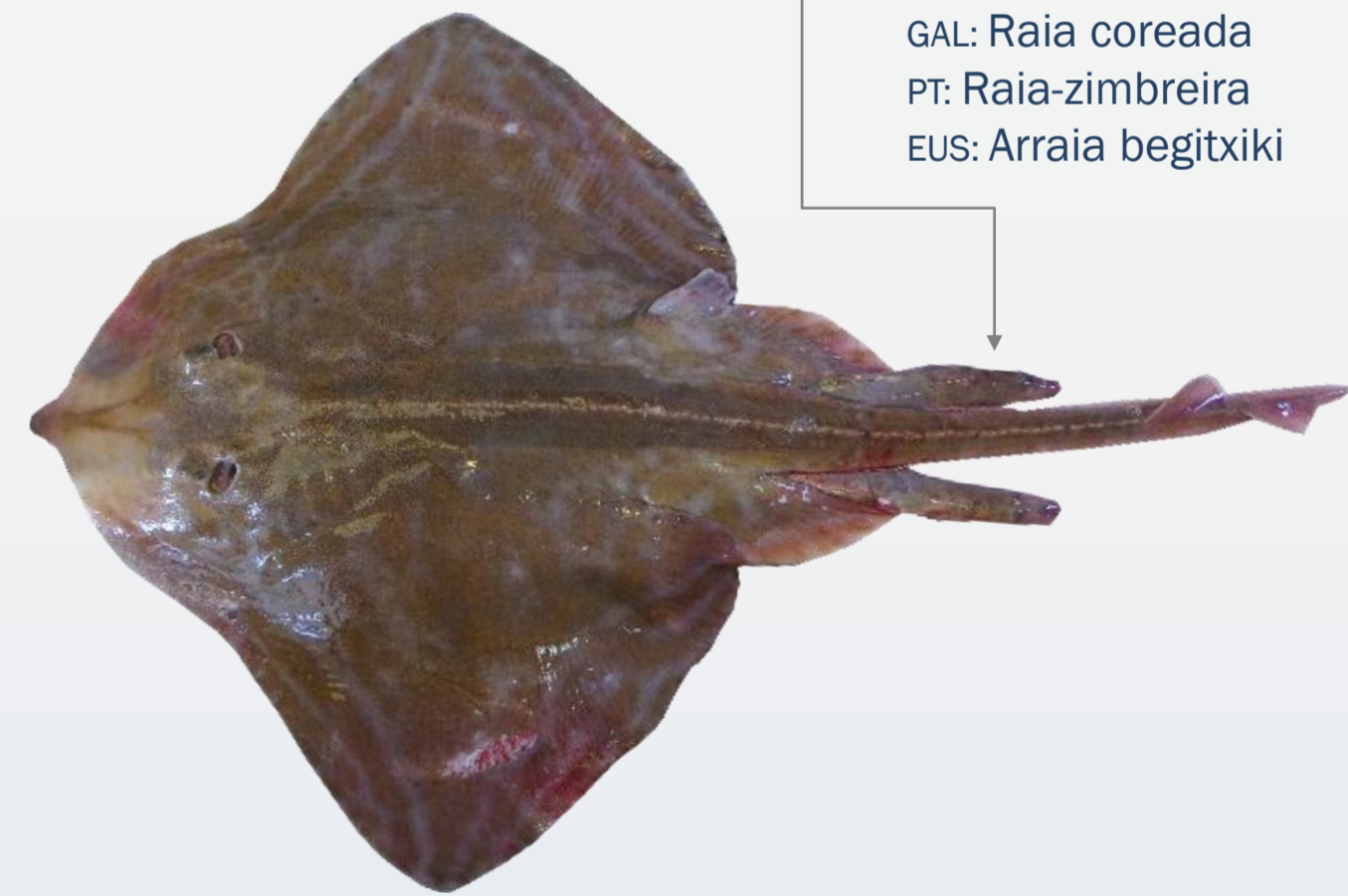
Raya de clavos

RJC *Raja clavata*
GAL: Raia cravuda, raspiñeira
PT: Raia-lenga
EUS: Arraia gastaka



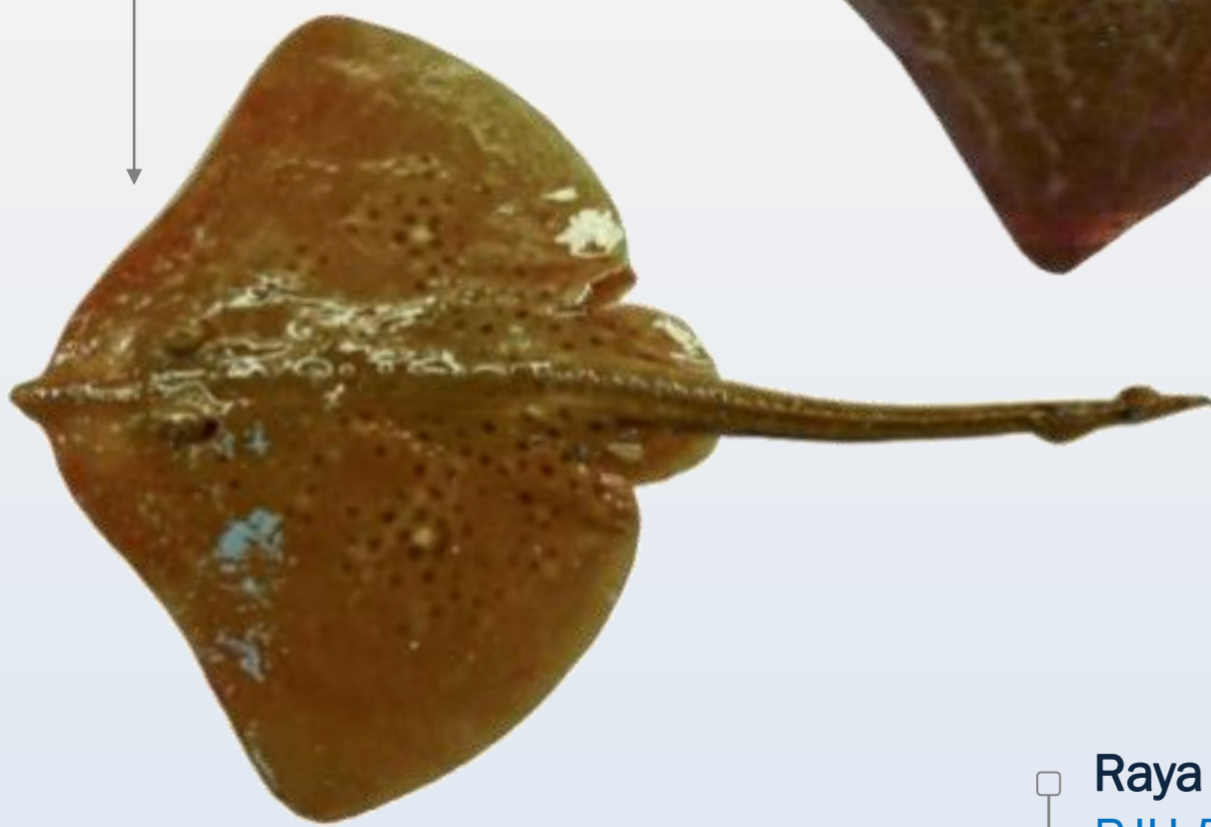
Raya colorada

RJE *Raja microcellata*
GAL: Raia coreada
PT: Raia-zimbreira
EUS: Arraia begitxiki



Raya pintada

RJM *Raja montagui*
GAL: Raia de pintas
PT: Raia-manchada
EUS: Arraia pikart

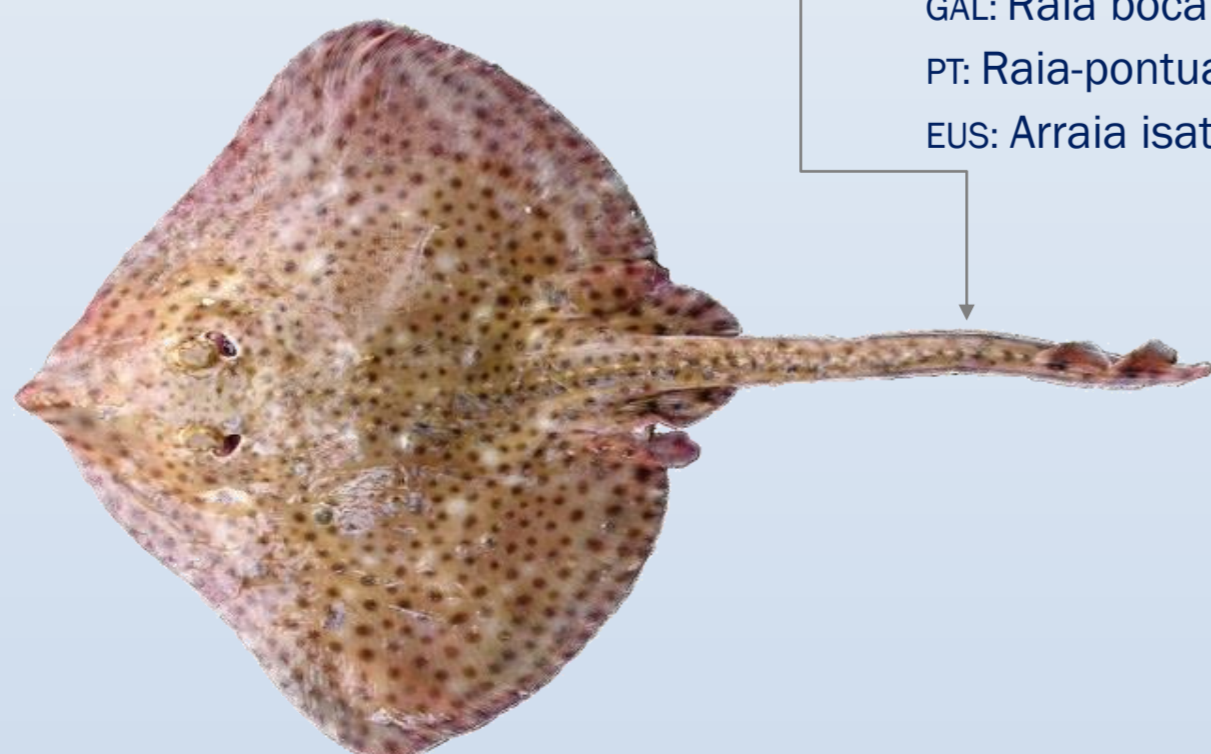


Neoraja sp.



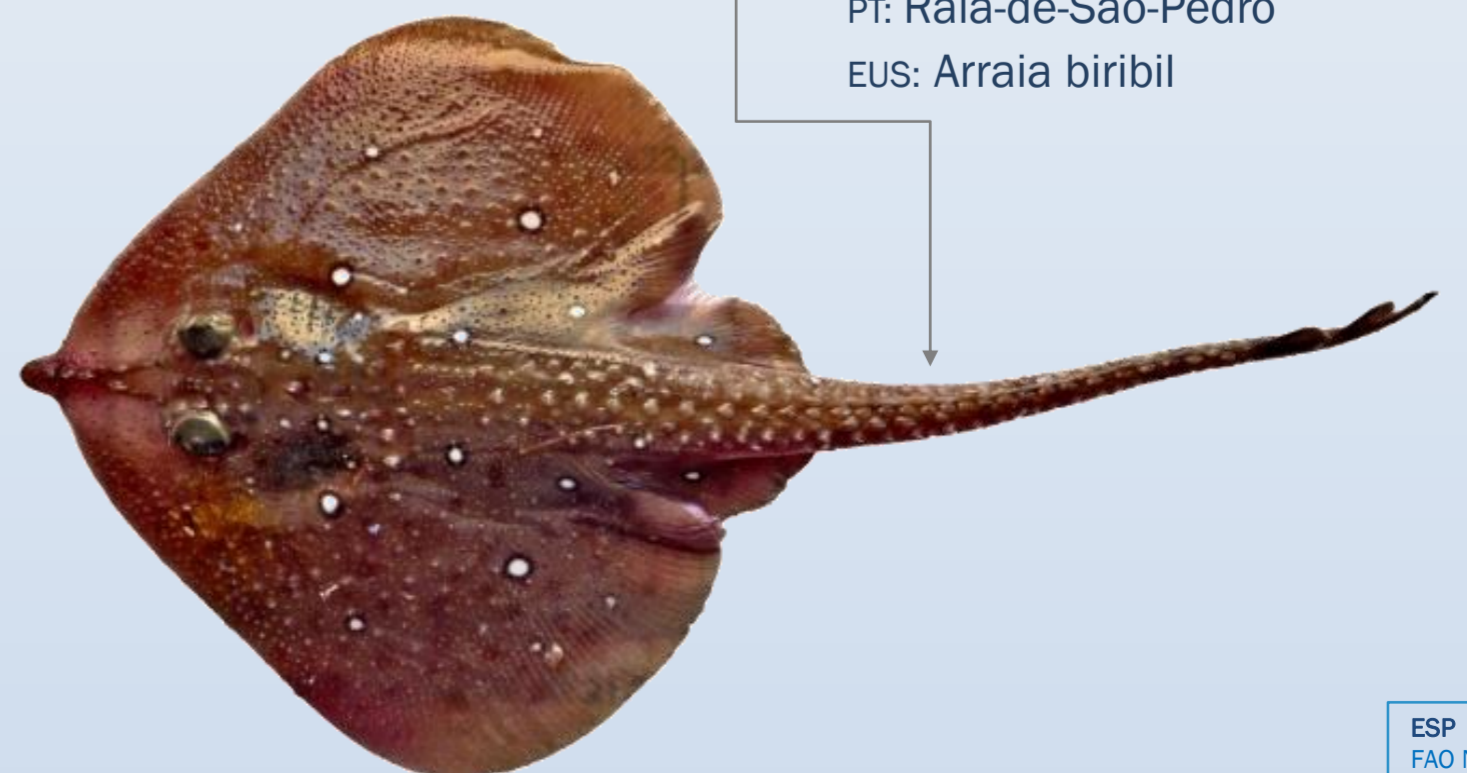
Raya Boca de Rosa

RJH *Raja brachyura*
GAL: Raia boca rosa
PT: Raia-pontuada
EUS: Arraia isatslabur



Raya falsa vela

RJI *Leucoraja circularis*
GAL: Raia de círculos
PT: Raia-de-São-Pedro
EUS: Arraia biribil



Leyenda

ESP
FAO Nombre científico
GAL / PT / EUS